



GreenSpace – en bærekraftig høyeffektiv LED-løsning

GreenSpace

Kundene vil gjerne ha den perfekte balansen mellom førstegangsinvesteringen og systemets kostnader gjennom hele dets levetid. GreenSpace er en kostnadseffektiv og bærekraftig downlight som kan brukes til å erstatte tradisjonelle CFL-downlights til almenbelysning. Den er utstyrt med den seneste LED-teknologien med ekstremt lavt strømforbruk samtidig som den leverer jevn lyseffekt, stabil fargeytelse og høy fargegjengivelse. Produktets lange levetid gjør dette til en ekte "monter og glem"-løsning.

Fordeler

- Høy systemeffektivitet: > 80 lm/W (DN460B/DN461B); > 100 lm/W (DN470B/DN471B)
- Energibesparelser på opptil 70 %: Totale eierkostnader tjenes inn på under to år
- I samsvar med regler for kontorbelysning, med stabil fargeytelse og høy fargegjengivelse

Funksjoner

- Energieffektiv, holdbar LED-teknologi
- Høy systemeffekt: > 80 lm/W (DN460B/DN461B); > 100 lm/W (DN470B/DN471B)
- Stabil fargeytelse og høy fargegjengivelse
- Leveres med IP44- eller nødbelysning
- Leveres i UGR22- and UGR19-utgaver

Søknad

- Kontorer
- Butikker
- Hoteller og sykehus

spesifikasjoner

| | |
|---|---------------------------------|
| Type | DN460B (UGR22-versjon, mini) |
| | DN461B (UGR19-versjon, mini) |
| | DN470B (UGR22-versjon, kompakt) |
| | DN471B (UGR19-versjon, kompakt) |
| Taktype | Gipstak |
| Lyskilde | Ikke-utsiftbar LED-modul |
| Effekt | DN460B/DN461B: 13.8 W |
| | DN470B/DN471B: 21 W |
| Lysytelse | DN460B: 1200 lm |
| | DN461B: 1150 lm |
| | DN470B: 2200 lm |
| | DN471B: 2100 lm |
| Fargetemperatur | Varmhvit, 3 000 K |
| | Neutral white, 4000 K |
| Fargegjengivelse | > 80 |
| Medianlevetid L70B50 | 70 000 timer |
| Medianlevetid L80B50 | 50 000 timer |
| Medianlevetid L90B50 | 25 000 timer |
| Gjennomsnittlig omgivelsestemperatur | +25 °C |

| | |
|-------------------------------|--|
| Driftstemperaturområde | +10 til +40 °C |
| e | |
| Driver | Separat |
| Nettspenning | 230 eller 240 V / 50-60 Hz |
| Dimming | Versjon uten dimming og DALI-versjon |
| Valgmuligheter | Nødbelysning (EL3) |
| | IP20- og IP44-versjoner |
| | Versjoner for gjennomkobling (CU3) |
| | Beskyttelsesglass, opal (PGO) |
| Materialer | Hus: formstøpt aluminium |
| | Reflektor: plast med aluminiumsoverflate |
| Farge | Hvit, RAL 9010 |
| Optikk | Plastreflektor med aluminiumsoverflate |
| Tilkobling | Skyvekontakt (PI) eller med strekkavlastning (PIP) |
| Montering | Festes ved hjelp av klemmer |
| | Versjoner for gjennomkobling tilgjengelige |
| | Monteres uten at du må fjerne lyskilder og optikk |
| Merknader | Ekstern driver inkludert |

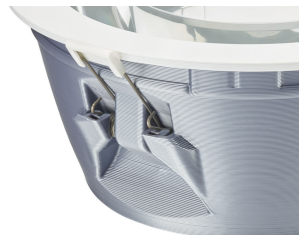
Versions



Produkt detaljer



Greenspace_EU_gen_2-
DN462_463_472_473B-1DPP.TIF



Greenspace_EU_gen_2-
DN462_463_472_473B-3DPP.TIF



Greenspace_EU_gen_2-
DN462_463_472_473B-2DPP.TIF



Greenspace_EU_gen_2-DN472B-
DPP.TIF

| | |
|--|---|
| - | |
| Andel driversvikt ved 5000 timer | 1 % |
| Bruksforhold | |
| Egnet for tilfeldig veksling mellom av og på | Ja |
| Generell informasjon | |
| Lyskjeglevinkel for lyskilde | - ° |
| Lyskildefeste | - |
| CE-merke | CE mark |
| IEC-beskyttelsesklasse | Sikkerhetsklasse II |
| Driver inkludert | Ja |
| ENEC-merke | ENEC mark |
| Brennbarhetsmerke | - |
| Forkobling | - |
| Test av glødetråd | Temperatur 750 °C, varighet 5 sek |
| Lyskilde kan byttes ut | No |
| Antall forkoblingsenheter | 1 unit |
| Antall lyskilder | 1 |
| Innledende ytelse (i samsvar med IEC) | |
| Oppr. Fargegjengivelsesindeks | >80 |
| Toleranse for lysytelse | +/-10% |
| Teknisk belysning | |
| Type optisk deksel / linsetilbehør | No |
| Mekanisk og innfatning | |
| Farge | Hvit RAL 9003 |

Bruksforhold

| Order Code | Full Product Name | For omgivelsestemperaturer mellom | Maksimalt dimmenivå |
|------------|--------------------------------------|-----------------------------------|---------------------|
| 38470800 | DN472B LED20S/830 PSU-E C PCC WH | -15 to +40 °C | Bruke ikke |
| 38471500 | DN472B LED20S/840 PSU-E C PCC WH | -15 to +40 °C | Bruke ikke |
| 38472200 | DN472B LED20S/830 PSD-VLC-E C PCC WH | -15 to +40 °C | 1% |
| 38473900 | DN472B LED20S/840 PSD-VLC-E C PCC WH | -15 to +40 °C | 1% |
| 79327200 | DN470B LED20S/830 PSU-E C WH P | +10 to +40 °C | Bruke ikke |
| 79328900 | DN470B LED20S/840 PSU-E C WH P | +10 to +40 °C | Bruke ikke |
| 79329600 | DN470B LED20S/830 PSD-VLC-E C WH P | +10 to +40 °C | 1% |
| 79330200 | DN470B LED20S/840 PSD-VLC-E C WH P | +10 to +40 °C | 1% |
| 79351700 | DN470B LED20S/830 PSU-E C ELP3 WH P | +10 to +40 °C | Bruke ikke |
| 79319700 | DN460B LED11S/830 PSU-E C WH P | +10 to +40 °C | Bruke ikke |
| 79320300 | DN460B LED11S/840 PSU-E C WH P | +10 to +40 °C | Bruke ikke |
| 79321000 | DN460B LED11S/830 PSD-VLC-E C WH P | +10 to +40 °C | 1% |
| 79322700 | DN460B LED11S/840 PSD-VLC-E C WH P | +10 to +40 °C | 1% |
| 79323400 | DN461B LED11S/830 PSU-E C WH P | +10 to +40 °C | Bruke ikke |
| 79324100 | DN461B LED11S/840 PSU-E C WH P | +10 to +40 °C | Bruke ikke |
| 79325800 | DN461B LED11S/830 PSD-VLC-E C WH P | +10 to +40 °C | 1% |
| 79326500 | DN461B LED11S/840 PSD-VLC-E C WH P | +10 to +40 °C | 1% |
| 79331900 | DN471B LED20S/830 PSU-E C WH P | +10 to +40 °C | Bruke ikke |
| 79332600 | DN471B LED20S/840 PSU-E C WH P | +10 to +40 °C | Bruke ikke |
| 79333300 | DN471B LED20S/830 PSD-VLC-E C WH P | +10 to +40 °C | 1% |
| 79334000 | DN471B LED20S/840 PSD-VLC-E C WH P | +10 to +40 °C | 1% |
| 79348700 | DN472B LED20S/840 PSU-E PCO WH | -15 to +40 °C | Bruke ikke |
| 79350000 | DN472B LED20S/840 PSD-VLC-E C PCO WH | -15 to +40 °C | 1% |

Godkjenning og bruk

| Order Code | Full Product Name | Mek. støt, beskyttelseskode | Ingress beskyttelseskode | Order Code | Full Product Name | Mek. støt, beskyttelseskode | Ingress beskyttelseskode |
|------------|--------------------------------------|-----------------------------|--------------------------|------------|-------------------------------------|-----------------------------|--------------------------|
| 38470800 | DN472B LED20S/830 PSU-E C PCC WH | IK06 | IP54 | 79330200 | DN470B LED20S/840 PSD-VLC-E C WH P | IK02 | IP20 |
| 38471500 | DN472B LED20S/840 PSU-E C PCC WH | IK06 | IP54 | 79351700 | DN470B LED20S/830 PSU-E C ELP3 WH P | IK02 | IP20 |
| 38472200 | DN472B LED20S/830 PSD-VLC-E C PCC WH | IK06 | IP54 | 79319700 | DN460B LED11S/830 PSU-E C WH P | IK02 | IP20 |
| 38473900 | DN472B LED20S/840 PSD-VLC-E C PCC WH | IK06 | IP54 | 79320300 | DN460B LED11S/840 PSU-E C WH P | IK02 | IP20 |
| 79327200 | DN470B LED20S/830 PSU-E C WH P | IK02 | IP20 | 79321000 | DN460B LED11S/830 PSD-VLC-E C WH P | IK02 | IP20 |
| 79328900 | DN470B LED20S/840 PSU-E C WH P | IK02 | IP20 | 79322700 | DN460B LED11S/840 PSD-VLC-E C WH P | IK02 | IP20 |
| 79329600 | DN470B LED20S/830 PSD-VLC-E C WH P | IK02 | IP20 | 79323400 | DN461B LED11S/830 PSU-E C WH P | IK02 | IP20 |

| Order Code | Full Product Name | Mek. støt, beskyttelseskode | Ingress beskyttelseskode |
|------------|------------------------------------|-----------------------------|--------------------------|
| 79324100 | DN461B LED11S/840 PSU-E C WH P | IK02 | IP20 |
| 79325800 | DN461B LED11S/830 PSD-VLC-E C WH P | IK02 | IP20 |
| 79326500 | DN461B LED11S/840 PSD-VLC-E C WH P | IK02 | IP20 |
| 79331900 | DN471B LED20S/830 PSU-E C WH P | IK02 | IP20 |
| 79332600 | DN471B LED20S/840 PSU-E C WH P | IK02 | IP20 |

| Order Code | Full Product Name | Mek. støt, beskyttelseskode | Ingress beskyttelseskode |
|------------|--------------------------------------|-----------------------------|--------------------------|
| 79333300 | DN471B LED20S/830 PSD-VLC-E C WH P | IK02 | IP20 |
| 79334000 | DN471B LED20S/840 PSD-VLC-E C WH P | IK02 | IP20 |
| 79348700 | DN472B LED20S/840 PSU-E PCO WH | IK06 | IP54 |
| 79350000 | DN472B LED20S/840 PSD-VLC-E C PCO WH | IK06 | IP54 |

Kontroller og dimming

| Order Code | Full Product Name | Kan dimmes |
|------------|--------------------------------------|------------|
| 38470800 | DN472B LED20S/830 PSU-E C PCC WH | No |
| 38471500 | DN472B LED20S/840 PSU-E C PCC WH | No |
| 38472200 | DN472B LED20S/830 PSD-VLC-E C PCC WH | Ja |
| 38473900 | DN472B LED20S/840 PSD-VLC-E C PCC WH | Ja |
| 79327200 | DN470B LED20S/830 PSU-E C WH P | No |
| 79328900 | DN470B LED20S/840 PSU-E C WH P | No |
| 79329600 | DN470B LED20S/830 PSD-VLC-E C WH P | Ja |
| 79330200 | DN470B LED20S/840 PSD-VLC-E C WH P | Ja |
| 79351700 | DN470B LED20S/830 PSU-E C ELP3 WH P | No |
| 79319700 | DN460B LED11S/830 PSU-E C WH P | No |
| 79320300 | DN460B LED11S/840 PSU-E C WH P | No |
| 79321000 | DN460B LED11S/830 PSD-VLC-E C WH P | Ja |

| Order Code | Full Product Name | Kan dimmes |
|------------|--------------------------------------|------------|
| 79322700 | DN460B LED11S/840 PSD-VLC-E C WH P | Ja |
| 79323400 | DN461B LED11S/830 PSU-E C WH P | No |
| 79324100 | DN461B LED11S/840 PSU-E C WH P | No |
| 79325800 | DN461B LED11S/830 PSD-VLC-E C WH P | Ja |
| 79326500 | DN461B LED11S/840 PSD-VLC-E C WH P | Ja |
| 79331900 | DN471B LED20S/830 PSU-E C WH P | No |
| 79332600 | DN471B LED20S/840 PSU-E C WH P | No |
| 79333300 | DN471B LED20S/830 PSD-VLC-E C WH P | Ja |
| 79334000 | DN471B LED20S/840 PSD-VLC-E C WH P | Ja |
| 79348700 | DN472B LED20S/840 PSU-E PCO WH | No |
| 79350000 | DN472B LED20S/840 PSD-VLC-E C PCO WH | Ja |

Drift og elektrisk

| Order Code | Full Product Name | Inngangsspenning |
|------------|--------------------------------------|------------------|
| 38470800 | DN472B LED20S/830 PSU-E C PCC WH | 220 to 240 V |
| 38471500 | DN472B LED20S/840 PSU-E C PCC WH | 220 to 240 V |
| 38472200 | DN472B LED20S/830 PSD-VLC-E C PCC WH | 220 to 240 V |
| 38473900 | DN472B LED20S/840 PSD-VLC-E C PCC WH | 220 to 240 V |
| 79327200 | DN470B LED20S/830 PSU-E C WH P | 220-240 V |
| 79328900 | DN470B LED20S/840 PSU-E C WH P | 220-240 V |
| 79329600 | DN470B LED20S/830 PSD-VLC-E C WH P | 220-240 V |
| 79330200 | DN470B LED20S/840 PSD-VLC-E C WH P | 220-240 V |
| 79351700 | DN470B LED20S/830 PSU-E C ELP3 WH P | 220-240 V |
| 79319700 | DN460B LED11S/830 PSU-E C WH P | 220-240 V |
| 79320300 | DN460B LED11S/840 PSU-E C WH P | 220-240 V |
| 79321000 | DN460B LED11S/830 PSD-VLC-E C WH P | 220-240 V |

| Order Code | Full Product Name | Inngangsspenning |
|------------|--------------------------------------|------------------|
| 79322700 | DN460B LED11S/840 PSD-VLC-E C WH P | 220-240 V |
| 79323400 | DN461B LED11S/830 PSU-E C WH P | 220-240 V |
| 79324100 | DN461B LED11S/840 PSU-E C WH P | 220-240 V |
| 79325800 | DN461B LED11S/830 PSD-VLC-E C WH P | 220-240 V |
| 79326500 | DN461B LED11S/840 PSD-VLC-E C WH P | 220-240 V |
| 79331900 | DN471B LED20S/830 PSU-E C WH P | 220-240 V |
| 79332600 | DN471B LED20S/840 PSU-E C WH P | 220-240 V |
| 79333300 | DN471B LED20S/830 PSD-VLC-E C WH P | 220-240 V |
| 79334000 | DN471B LED20S/840 PSD-VLC-E C WH P | 220-240 V |
| 79348700 | DN472B LED20S/840 PSU-E PCO WH | 220-240 V |
| 79350000 | DN472B LED20S/840 PSD-VLC-E C PCO WH | 220-240 V |

Generell informasjon

| Order Code | Full Product | | | | |
|------------|----------------|--------------|--------------------|------------|-------------------|
| | Name | Nødbelysning | lyskildeserierkode | Optikktype | Produktserierkode |
| 38470800 | DN472B LED20S/ | No | LED20S | C | DN471B |

| Order Code | Full Product Name | Nødbelysning | lyskildeseriekode | Optikktype | Produktseriekode |
|------------|---|--------------|-------------------|------------|------------------|
| | 830 PSU-E C PCC WH | | | | |
| 38471500 | DN472B LED20S/ 840 PSU-E C PCC WH | No | LED20S | C | DN471B |
| 38472200 | DN472B LED20S/ 830 PSD- VLC-E C PCC WH | No | LED20S | C | DN471B |
| 38473900 | DN472B LED20S/ 840 PSD- VLC-E C PCC WH | No | LED20S | C | DN471B |
| 79327200 | DN470B LED20S/ 830 PSU-E C WH P | - | LED20S | C | DN470B |
| 79328900 | DN470B LED20S/ 840 PSU-E C WH P | - | LED20S | C | DN470B |
| 79329600 | DN470B LED20S/ 830 PSD- VLC-E C WH P | - | LED20S | C | DN470B |
| 79330200 | DN470B LED20S/ 840 PSD- VLC-E C WH P | - | LED20S | C | DN470B |
| 79351700 | DN470B LED20S/ 830 PSU-E C ELP3 WH P | EL3 | LED20S | C | DN470B |
| 79319700 | DN460B LED11S/ | - | LED11S | C | DN460B |

| Order Code | Full Product Name | Nødbelysning | lyskildeseriekode | Optikktype | Produktseriekode |
|------------|---|--------------|-------------------|------------|------------------|
| | 830 PSU-E C WH P | | | | |
| 79320300 | DN460B LED11S/ 840 PSU-E C WH P | - | LED11S | C | DN460B |
| 79321000 | DN460B LED11S/ 830 PSD- VLC-E C WH P | - | LED11S | C | DN460B |
| 79322700 | DN460B LED11S/ 840 PSD- VLC-E C WH P | - | LED11S | C | DN460B |
| 79323400 | DN461B LED11S/ 830 PSU-E C WH P | - | LED11S | C | DN461B |
| 79324100 | DN461B LED11S/ 840 PSU-E C WH P | - | LED11S | C | DN461B |
| 79325800 | DN461B LED11S/ 830 PSD- VLC-E C WH P | - | LED11S | C | DN461B |
| 79326500 | DN461B LED11S/ 840 PSD- VLC-E C WH P | - | LED11S | C | DN461B |
| 79331900 | DN471B LED20S/ 830 PSU-E C WH P | - | LED20S | C | DN471B |
| 79332600 | DN471B LED20S/ 840 | - | LED20S | C | DN471B |

| Order Code | Full Product Name | Nødbelysning | lyskildeseriekode | Optikktype | Produktseriekode |
|------------|---|--------------|-------------------|------------|------------------|
| | PSU-E C WH P | | | | |
| 79333300 | DN471B LED20S/ 830 PSD- VLC-E C WH P | - | LED20S | C | DN471B |
| 79334000 | DN471B LED20S/ 840 PSD- | - | LED20S | C | DN471B |

| Order Code | Full Product Name | Nødbelysning | lyskildeseriekode | Optikktype | Produktseriekode |
|------------|---|--------------|-------------------|------------|------------------|
| | VLC-E C WH P | | | | |
| 79348700 | DN472B LED20S/ 840 PSU-E PCO WH | - | LED20S | No | DN471B |
| 79350000 | DN472B LED20S/ 840 PSD- VLC-E C PCO WH | - | LED20S | No | DN471B |

Innledende ytelse (i samsvar med IEC) (1/2)

| Order Code | Full Product Name | Opprinnelig kromatisitet | Oppr. Korr. Fargetemperatur | Opprinnelig lyseffekt for LED-armatur | Opprinnelig lysytelse |
|------------|--|---------------------------|-----------------------------|---------------------------------------|-----------------------|
| 38470800 | DN472B LED20S/83 O PSU-E C PCC WH | (0.44, 0.40) SDCM <5 | 3000 K | 120 lm/W | 2025 lm |
| 38471500 | DN472B LED20S/84 O PSU-E C PCC WH | (0.38, 0.38) SDCM <5 | 4000 K | 125 lm/W | 2100 lm |
| 38472200 | DN472B LED20S/83 O PSD- VLC-E C PCC WH | (0.44, 0.40) SDCM <5 | 3000 K | 120 lm/W | 2025 lm |
| 38473900 | DN472B LED20S/84 O PSD- VLC-E C PCC WH | (0.38, 0.38) SDCM <5 | 4000 K | 125 lm/W | 2100 lm |
| 79327200 | DN470B LED20S/83 O PSU-E C WH P | (0.43, 0.40) SDCM <3.5 | 3000 K | 126 lm/W | 2100 lm |
| 79328900 | DN470B LED20S/84 O PSU-E C WH P | (0.38, 0.38) SDCM <3.5 | 4000 K | 131 lm/W | 2200 lm |
| 79329600 | DN470B LED20S/83 O PSD- | (0.43, 0.40) SDCM <3.5 | 3000 K | 126 lm/W | 2100 lm |

| Order Code | Full Product Name | Opprinnelig kromatisitet | Oppr. Korr. Fargetemperatur | Opprinnelig lyseffekt for LED-armatur | Opprinnelig lysytelse |
|------------|--|---------------------------|-----------------------------|---------------------------------------|-----------------------|
| | VLC-E C WH P | | | | |
| 79330200 | DN470B LED20S/84 O PSD- VLC-E C WH P | (0.38, 0.38) SDCM <3.5 | 4000 K | 131 lm/W | 2200 lm |
| 79351700 | DN470B LED20S/83 O PSU-E C ELP3 WH P | (0.43, 0.40) SDCM <3.5 | 3000 K | 126 lm/W | 2100 lm |
| 79319700 | DN460B LED11S/830 PSU-E C WH P | (0.43, 0.40) SDCM <3.5 | 3000 K | 110 lm/W | 1100 lm |
| 79320300 | DN460B LED11S/840 PSU-E C WH P | (0.38, 0.38) SDCM <3.5 | 4000 K | 114 lm/W | 1125 lm |
| 79321000 | DN460B LED11S/830 PSD-VLC-E C WH P | (0.43, 0.40) SDCM <3.5 | 3000 K | 120 lm/W | 1100 lm |
| 79322700 | DN460B LED11S/840 PSD-VLC-E C WH P | (0.38, 0.38) SDCM <3.5 | 4000 K | 124 lm/W | 1125 lm |
| 79323400 | DN461B LED11S/830 | (0.43, 0.40) SDCM <3.5 | 3000 K | 107 lm/W | 1050 lm |

| Order Code | Full Product Name | Opprinnelig kromatisitet | Oppr. Korr. Fargetemperatur | Opprinnelig lyseffekt for | |
|------------|---|---------------------------|-----------------------------|---------------------------|-----------------------|
| | | | | LED-armatur | Opprinnelig lysytelse |
| | PSU-E C WH P | | | | |
| 79324100 | DN461B LED11S/840 PSU-E C WH P | (0.38, 0.38) SDCM <3.5 | 4000 K | 111 lm/W | 1100 lm |
| 79325800 | DN461B LED11S/830 PSD-VLC-E C WH P | (0.43, 0.40) SDCM <3.5 | 3000 K | 117 lm/W | 1050 lm |
| 79326500 | DN461B LED11S/840 PSD-VLC-E C WH P | (0.38, 0.38) SDCM <3.5 | 4000 K | 121 lm/W | 1100 lm |
| 79331900 | DN471B LED20S/83 0 PSU-E C WH P | (0.43, 0.40) SDCM <3.5 | 3000 K | 120 lm/W | 2025 lm |
| 79332600 | DN471B LED20S/84 | (0.38, 0.38) SDCM <3.5 | 4000 K | 125 lm/W | 2100 lm |

| Order Code | Full Product Name | Opprinnelig kromatisitet | Oppr. Korr. Fargetemperatur | Opprinnelig lyseffekt for | |
|------------|--|---------------------------|-----------------------------|---------------------------|-----------------------|
| | | | | LED-armatur | Opprinnelig lysytelse |
| | 0 PSU-E C WH P | | | | |
| 79333300 | DN471B LED20S/83 0 PSD- VLC-E C WH P | (0.43, 0.40) SDCM <3.5 | 3000 K | 120 lm/W | 2025 lm |
| 79334000 | DN471B LED20S/84 0 PSD- VLC-E C WH P | (0.38, 0.38) SDCM <3.5 | 4000 K | 125 lm/W | 2100 lm |
| 79348700 | DN472B LED20S/84 0 PSU-E PCO WH | (0.38, 0.38) SDCM <3.5 | 4000 K | 108 lm/W | 2100 lm |
| 79350000 | DN472B LED20S/84 0 PSD- VLC-E C PCO WH | (0.38, 0.38) SDCM <3.5 | 4000 K | 107 lm/W | 2100 lm |

Innledende ytelse (i samsvar med IEC) (2/2)

| Order Code | Full Product Name | Opprinnelig inngangseffekt |
|------------|--------------------------------------|----------------------------|
| 38470800 | DN472B LED20S/830 PSU-E C PCC WH | 16.8 W |
| 38471500 | DN472B LED20S/840 PSU-E C PCC WH | 16.8 W |
| 38472200 | DN472B LED20S/830 PSD-VLC-E C PCC WH | 16.8 W |
| 38473900 | DN472B LED20S/840 PSD-VLC-E C PCC WH | 16.8 W |
| 79327200 | DN470B LED20S/830 PSU-E C WH P | 16.8 W |
| 79328900 | DN470B LED20S/840 PSU-E C WH P | 16.8 W |
| 79329600 | DN470B LED20S/830 PSD-VLC-E C WH P | 16.8 W |
| 79330200 | DN470B LED20S/840 PSD-VLC-E C WH P | 16.8 W |
| 79351700 | DN470B LED20S/830 PSU-E C ELP3 WH P | 16.8 W |
| 79319700 | DN460B LED11S/830 PSU-E C WH P | 9.8 W |
| 79320300 | DN460B LED11S/840 PSU-E C WH P | 9.8 W |
| 79321000 | DN460B LED11S/830 PSD-VLC-E C WH P | 9 W |

| Order Code | Full Product Name | Opprinnelig inngangseffekt |
|------------|--------------------------------------|----------------------------|
| 79322700 | DN460B LED11S/840 PSD-VLC-E C WH P | 9 W |
| 79323400 | DN461B LED11S/830 PSU-E C WH P | 9.8 W |
| 79324100 | DN461B LED11S/840 PSU-E C WH P | 9.8 W |
| 79325800 | DN461B LED11S/830 PSD-VLC-E C WH P | 9 W |
| 79326500 | DN461B LED11S/840 PSD-VLC-E C WH P | 9 W |
| 79331900 | DN471B LED20S/830 PSU-E C WH P | 16.8 W |
| 79332600 | DN471B LED20S/840 PSU-E C WH P | 16.8 W |
| 79333300 | DN471B LED20S/830 PSD-VLC-E C WH P | 16.8 W |
| 79334000 | DN471B LED20S/840 PSD-VLC-E C WH P | 16.8 W |
| 79348700 | DN472B LED20S/840 PSU-E PCO WH | 19.4 W |
| 79350000 | DN472B LED20S/840 PSD-VLC-E C PCO WH | 19.6 W |

